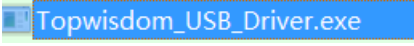


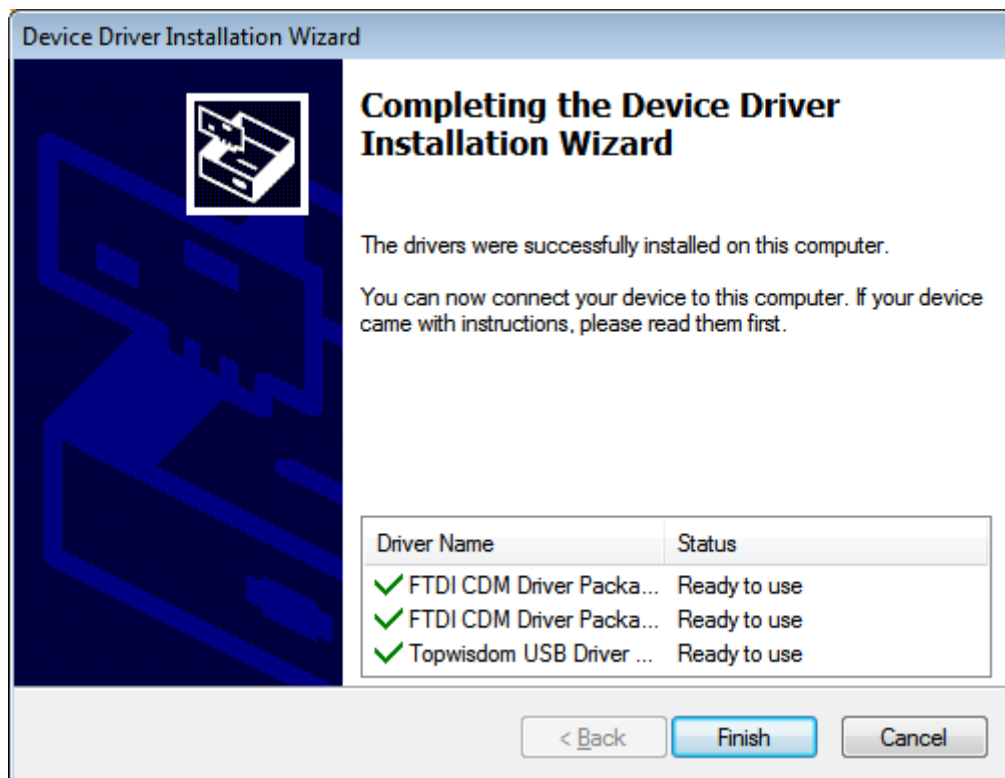
CorelDRAW plugin V8.8.5 Installation Guide

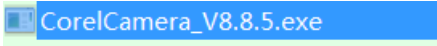
Version update instructions

1. Support TL-A4, TL-501C and other motion control card USB communication.

Installation Notes

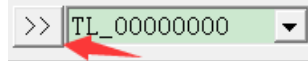
1. Install the USB driver  first. After double-clicking the run, click Next to complete the installation.



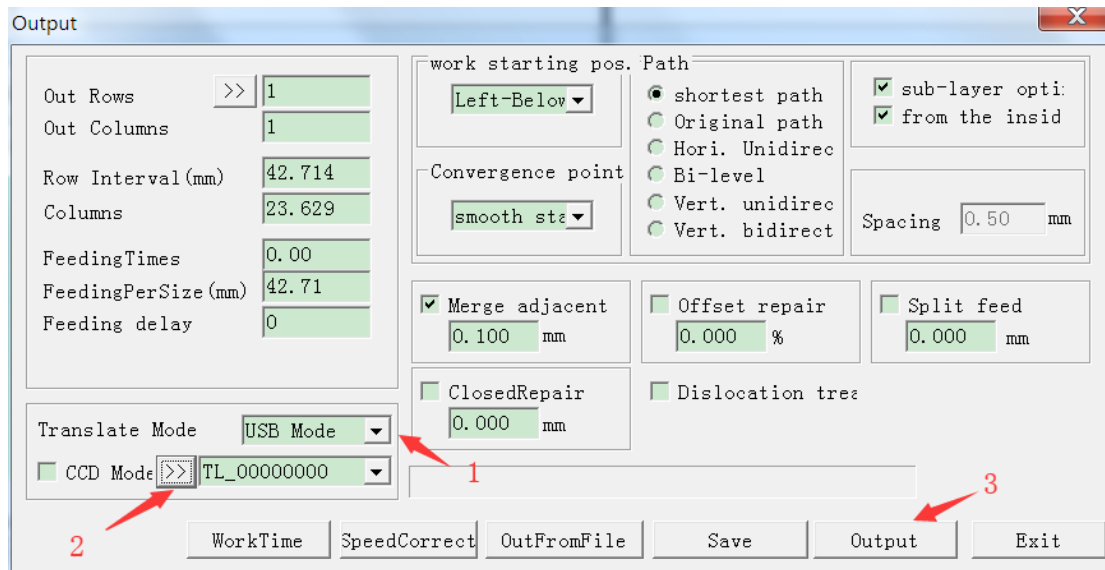
2. Install the plugin . After double-clicking the run, click Next to complete the installation.

About communication USB communication instructions

In the output interface, select the USB mode, then select the search button



, search for the device, if it is connected, open the interface, it will automatically search for the device, and then output the engraving.



Similarly, on the Device Management Settings page, select the Search button, search for the connected port device, and then click the Read or Write button to perform the operation.

